



Deep Double 24kt ◆★
MA24.00DB AW = 18g
100% Gold



Rosenoble 23 3/4 kt ◆★
MA23.75RN AW = 18g
MA23.75RN/21 = 21g
98.4% Gold-.6% Silver-1% Copper



Dukaten 23 3/4 kt ◆■★
MA23.50DD AW = 18g
98% Gold-1.2% Silver-
8% Copper



Red Gold 23kt ◆
MA23.00RG AW = 16g
97.5% Gold-2.5% Copper



Florin 23kt
MA23.00FG AW = 16g
95.2% Gold-2.4% Silver-
2.4% Copper



23kt ◆■★
MA23.00DB 18g
MA23.00GL 16g
MA23.00SF 16g
95.2% Gold-3.6% Silver-1.2% Copper



Champagne/Rose Gold ◆
MA22.50CH AW = 16g
94% Gold-6% Palladium



Moon Gold ◆■
MA22.00MG AW = 16g
92% Gold-3.5% Silver-
4.5% Palladium



22kt ◆■
MA22.00DB AW = 18g
MA22.00GL AW = 16g
MA22.00SF AW = 16g
91.8% Gold-5.9% Silver-2.3% Copper



French Pale 22kt
MA22.00FP AW = 16g
91.5% Gold-8.5% Silver



Caplain 20kt
MA20.00CP AW = 16g
80% Gold-4% Silver-
12% Palladium-4% Platinum



Lemon 18kt ◆
MA18.00LE AW = 16g
75% Gold-25% Silver



Pale 16kt ◆■
MA16.00PL AW = 16g
65% Gold -35% Silver



White 13 3/4 kt ◆
MA13.25WH AW = 16g
55% Gold-45% Silver



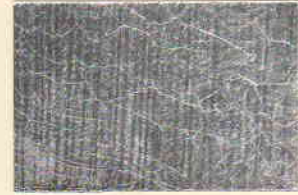
White 12kt ◆■
MA12.00WH AW = 16g
51% Gold-49% Silver



White 6kt ◆
MA6.00WH AW = 16g
25% Gold-75% Silver



Palladium ◆■★
MA00.00PG AW = 16g
100% Palladium



100% Silver
MA00.00SH 85mm AW=40g
MA00.00SV 95mm AW=28g ◆
MA00.00ST 95mm AW=20g
MA140SV 140mm AW=65g

Loose leaf oil gilded on white paper. AW = average total weight (gold + alloy) in grams per 1000 leaves

◆ Indicates leaf is available in patent. ■ Indicates leaf is available in ribbon. ★ Indicates appropriate for exterior use.