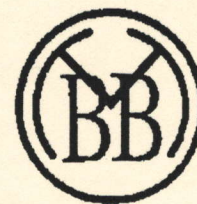




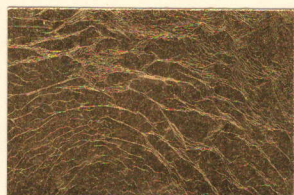
Gold Leaf Italian



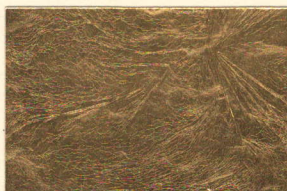
PDF file for comparative use only

Brambilla Battiloro

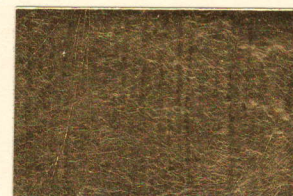
Gold leaf average thickness is 0.36 to 0.5 microns.



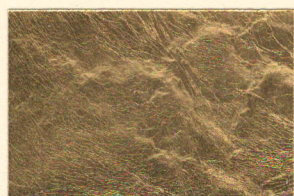
Fine Gold
IT24.00FG AW=24g
100% GOLD



Swiss Restorer 23³/₄kt
IT23.75SR AW=22g
99% GOLD - 1% SILVER



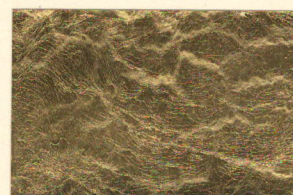
Glass 23kt
IT23.00GL AW=18g
96.5% GOLD-2.5% SILVER-1% COPPER



Surface 23kt ◆
IT23.00SF AW=18g
96.5% GOLD-2.5% SILVER-1% COPPER



Red 23kt
IT23.00RG AW=18g
96% GOLD-1% SILVER-3% COPPER



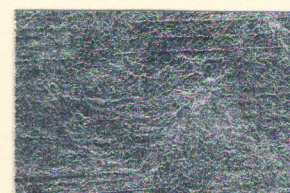
Glass 22kt
IT22.00GL AW=16g
92% GOLD-6.3% SILVER-1.7% COPPER



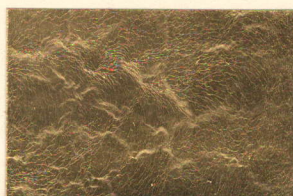
Surface 22kt ◆
IT22.00SF AW=16g
92% GOLD-6.3% SILVER-1.7% COPPER



White 12kt ◆
IT12.00WH AW=22g
50% GOLD - 50% SILVER



Silver ◆ & Silver 5"x5"
IT00.00SV AW=29g
IT130SV AW=50g
100% SILVER



Gold Foil 23kt
IT23-65GLF AW=65g
96.5% GOLD-2.5% SILVER-1% COPPER



Silver Foil
FOT-160SV AW=160g
100% Silver

Loose leaf oil gilded on white paper. The ◆ indicates leaf that is also available in patent form.

AW = Average total weight (gold + alloy) indicated in grams per 1000 leaves.

The ■ indicates leaf that is available as Ribbon Gold Leaf.