



# Gold Leaf

## Italian

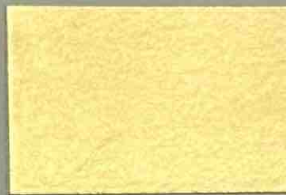


# Brambilla Battiloro

Gold leaf average thickness is 0.36 to 0.5 microns.



**Fine 24kt**  
IT24.00FG - AW=24g  
100% Gold



**Swiss Restorer 23 3/4kt**  
IT23.75SR - AW=22g  
99% Gold - 1% Silver



**Glass 23Kt**  
IT23.00GL - AW=18g  
96.5% Gold-2.5% Silver-1% Copper



**Surface 23kt** ◆  
IT23.00SF - AW=16g  
96.5% Gold-2.5% Silver-1% Copper



**Red 23kt**  
IT23.00RG - AW=18g  
96% GOLD-1% SILVER-3% COPPER



**Glass 22kt**  
IT22.00GL - AW=16g  
92% GOLD-6.3% SILVER-1.7% COPPER



**Surface 22kt** ◆  
IT22.00SF - AW=16g  
92% GOLD-6.3% SILVER-1.7% COPPER



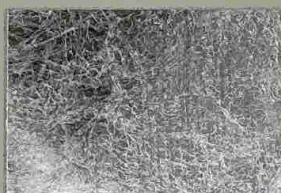
**Moon Gold 22kt**  
IT22.00MG - AW=16g  
92% GOLD-3% SILVER-5% PALLADIUM



**White 12kt** ◆  
IT12.00WH  
50% GOLD-50% SILVER



**Silver** ◆ & Silver 5"x5"  
IT00.00SV - AW=29g  
IT130SV - AW=50g  
100% SILVER



**Palladium**  
IT00.PD/80 - AW=14g  
100% Palladium



**Silver Foil**  
FOT-160SV - AW=160g  
100% Silver



**Gold Foil 23kt**  
IT23-65GLF AW=65g  
96.5% GOLD-2.5% SILVER-1% COPPER

Loose leaf oil gilded on white paper. The ◆ indicates leaf that is also available in patent form.  
AW = Average total weight (gold + alloy) indicated in grams per 1000 leaves.  
The ■ indicates leaf that is available as Ribbon Gold Leaf.